

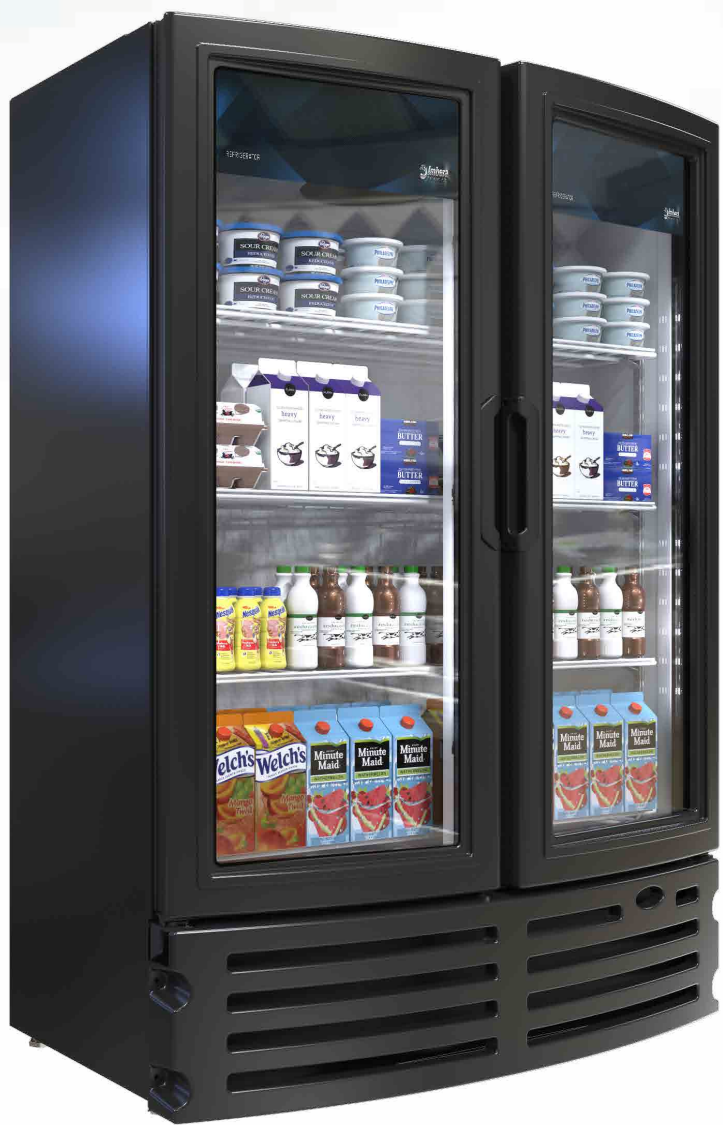


VRD21 HC BW

VERTICAL COOLER

ESTABLISHING A **NEW STANDARD** IN THE FOODSERVICE INDUSTRY.

Energy efficient, eco-friendly HC refrigerant with low charge, spark-free components, and the lowest utility costs in its category.



KEY FEATURES



- **Eco-Friendly Refrigerant**
Environmentally friendly hydrocarbon refrigerant has low Global Warming Potential (GWP). Meets all USA & California refrigerant & energy standards.



- **Electronic Temperature Controller**
Patented ETC1H electronic controller assures optimal refrigeration performance through precision temperature control, and intelligent control for defrost cycle, compressor & other component functions.



- **High Power Reliable Refrigeration System**
Fast pull down, optimal internal air circulation and reliable refrigeration, maintaining colder temperatures for food preservation.



- **Newly Designed Condenser**
New condenser featuring a joints reduction down to zero increasing long term refrigeration reliability and safeguarding against any system leaks.



- **Standard LED Lighting System**
Ultra bright low energy interior LED illumination system provides optimal merchandise display visibility. Low profile, door mounted, clip-in LED design.

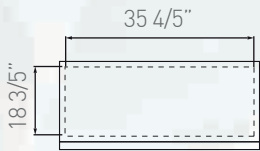


- **Spark-Free Refrigeration Components**
All Reach-In models will have spark free refrigeration components for optimal safety, per UL requirements.

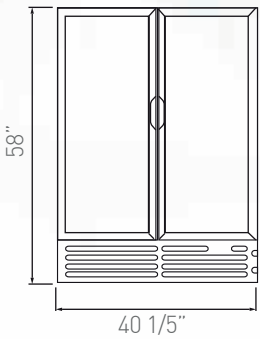
ESTABLISHING A **NEW STANDARD** IN THE FOODSERVICE INDUSTRY.

PRODUCT VIEWS

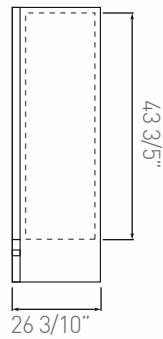
TOP VIEW



FRONT VIEW



SIDE VIEW



ADDITIONAL FEATURES



> Manual lock - external lock available



> Gravity kit - Display technology beverage Visi-Slide



> Casters and legs available



> Price Kit - Available for shelf display

Customer service and warranty

Three year limited warranty, includes parts and labor.

An additional two year warranty is issued on the compressor (USA & Canada only).

Operators must follow installation and operational guidelines per Imbera Users Manual.

Each cooler must be connected directly to a single power supply, otherwise warranty will be voided.

Customer service: 866.548.5770

TECHNICAL SPECIFICATIONS

Exterior Dimensions

H: 58" 147 cm
W: 40 1/5" 102 cm
D: 26 3/10" 67 cm

Interior Dimensions

H: 43 3/5" 111 cm
W: 35 4/5" 91 cm
D: 18 3/5" 47 cm

Usable Interior Capacity

H: 35 4/5" 81 cm
W: 33 9/10" 86 cm
D: 14 2/5" 37 cm

Usable Volume

16.7 ft³
475 lts

Doors	Door construction	Shelves	Shelves Size	
2	Plastic frame	3	W: N/A	N/A
			D: N/A	N/A

External Material Pre-painted steel

Internal Material Pre-painted steel

REFRIGERATION PERFORMANCE DATA

Refrigerant

R290 2.3 Oz (0.065 kg)

Energy Consumption

1.830 kWh/24h

Compressor Power

1/3 HP

Condenser

Finless (low maintenance)

Thermostat setting default

Cut-Out
32°F [0°C]

Cut-In
44.6°F [7°C]

ELECTRICAL DATA

Power supply

115V/60 Hz

AMPS

3.3 A

Lighting

230 Lux Output
10 modules
8 LED per module

Plug Type

NEMA 5-15P

Controller

ETC1H

Cord length

118" [300 cm]

LOGISTIC DATA

Trailer Loads

53': 44

Unit weight with packaging

253.9 lb 115.2 kg

without packaging

246.9 lb 112 kg

Dimensions w/packaging

H: 61 2/5" 156 cm

W: 42 1/10" 107 cm

D: 29 4/5" 76 cm

*Energy consumption based on ANSI/ASHRAE Standard 72-2005

*BMAD System (Low maintenance high performance)

*Dimensions rounded up to the nearest inch or centimeter

*Specifications subject to change without notice

*H: Height, W: Width, D: Depth

07/09/2021

PRELIMINARY SPEC SHEET