



# VRD37 HC BW

## VERTICAL COOLER

ESTABLISHING A **NEW STANDARD** IN THE FOODSERVICE INDUSTRY.

Energy efficient, eco-friendly HC refrigerant with low charge, spark-free components, and the lowest utility costs in its category.

### KEY FEATURES



- **Eco-Friendly Refrigerant**  
Environmentally friendly hydrocarbon refrigerant has low Global Warming Potential (GWP). Meets all USA & California refrigerant & energy standards.



- **Electronic Temperature Controller**  
Patented ETC1H electronic controller assures optimal refrigeration performance through precision temperature control, and intelligent control for defrost cycle, compressor & other component functions.



- **High Power Reliable Refrigeration System**  
Fast pull down, optimal internal air circulation and reliable refrigeration, maintaining colder temperatures for food preservation.



- **Newly Designed Condenser**  
New condenser featuring a joints reduction down to zero increasing long term refrigeration reliability and safeguarding against any system leaks.



- **Standard LED Lighting System**  
Ultra bright low energy interior LED illumination system provides optimal merchandise display visibility. Low profile, door mounted, clip-in LED design.



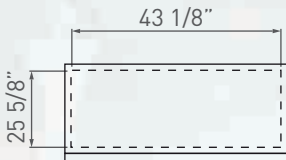
- **Spark-Free Refrigeration Components**  
All Reach-In models will have spark free refrigeration components for optimal safety, per UL requirements.



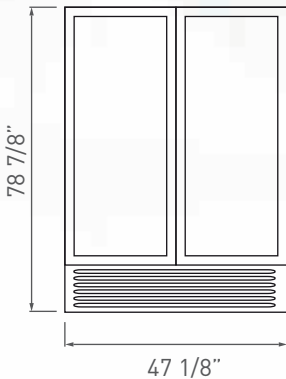
ESTABLISHING A **NEW STANDARD** IN THE FOODSERVICE INDUSTRY.

### PRODUCT VIEWS

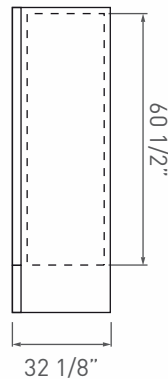
#### TOP VIEW



#### FRONT VIEW



#### SIDE VIEW



### ADDITIONAL FEATURES



> Lock options with different capabilities available



> Gravity kit - Display technology beverage Visi-Slide



> Casters and legs available



> Price Kit - Available for shelf display



> Sliding Door model option available

#### Customer service and warranty

Three year limited warranty, includes parts and labor.

An additional two year warranty is issued on the compressor (USA & Canada only).

Operators must follow installation and operational guidelines per Imbera Users Manual.

Each cooler must be connected directly to a single power supply, otherwise warranty will be voided.

Customer service: 866.548.5770

### TECHNICAL SPECIFICATIONS

#### Exterior Dimensions

H: 78 7/8" 200 cm  
W: 47 1/8" 120 cm  
D: 32 1/8" 81 cm

#### Interior Dimensions

H: 60 1/2" 154 cm  
W: 43 1/8" 110 cm  
D: 25 5/8" 65 cm

#### Usable Interior Capacity

H: 52 7/8" 134 cm  
W: 39 7/8" 101 cm  
D: 20 1/8" 51 cm

#### Usable Volume

37.4 ft<sup>3</sup>  
1059.7 lts

Doors	Door construction	Shelves	Shelves Size	
2	V7 Plastic frame	10	<b>W:</b> 20 1/2"	52 cm
			<b>D:</b> 20 5/8"	52 cm

**External Material** Pre-painted steel

**Internal Material** Pre-painted steel

### REFRIGERATION PERFORMANCE DATA

#### Refrigerant

R290 3 Oz (0.085 kg)

#### Energy Consumption

3.120 kWh/24h

#### Compressor Power

1/2 HP

#### Condenser

Finless (low maintenance)

#### Thermostat setting default

**Cut-Out**  
32°F [0°C]

**Cut-In**  
44.6°F [7°C]

### ELECTRICAL DATA

#### Power supply

115V/60 Hz

#### AMPS

8.3 A

#### Lighting

282.5 Lux Output  
18 modules  
8 LED per module

#### Plug Type

NEMA 5-15P

#### Controller

ETC1H

#### Cord length

118" [300 cm]

### LOGISTIC DATA

#### Trailer Loads

53': 31

#### Unit weight with packaging

423.3 lb 192 kg

without packaging

430.8 lb 195.4 kg

#### Dimensions w/packaging

**H:** 82 1/8" 209 cm

**W:** 49 3/8" 125 cm

**D:** 34 1/8" 87 cm

\*Energy consumption based on ANSI/ASHRAE Standard 72-2005

\*BMAD System (Low maintenance high performance)

\*Dimensions rounded up to the nearest inch or centimeter

\*Specifications subject to change without notice

\*H: Height, W: Width, D: Depth

09/07/2021