



VRD43 HC BW

VERTICAL COOLER

ESTABLISHING A **NEW STANDARD** IN THE FOODSERVICE INDUSTRY.

Energy efficient, eco-friendly HC refrigerant with low charge, spark-free components, and the lowest utility costs in its category.



KEY FEATURES



- **Eco-Friendly Refrigerant**
Environmentally friendly hydrocarbon refrigerant has low Global Warming Potential (GWP). Meets all USA & California refrigerant & energy standards.



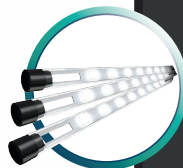
- **Electronic Temperature Controller**
Patented ETC1H electronic controller assures optimal refrigeration performance through precision temperature control, and intelligent control for defrost cycle, compressor & other component functions.



- **High Power Reliable Refrigeration System**
Fast pull down, optimal internal air circulation and reliable refrigeration, maintaining colder temperatures for food preservation.



- **Newly Designed Condenser**
New condenser featuring a joints reduction down to zero increasing long term refrigeration reliability and safeguarding against any system leaks.



- **Standard LED Lighting System**
Ultra bright low energy interior LED illumination system provides optimal merchandise display visibility. Low profile, door mounted, clip-in LED design.



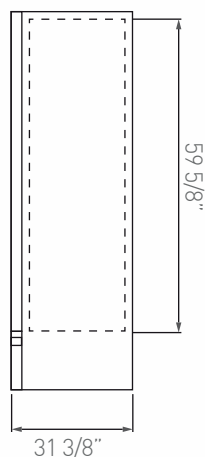
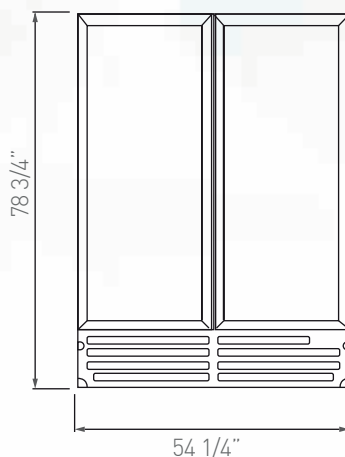
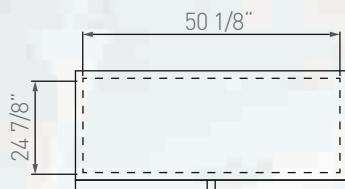
- **Spark-Free Refrigeration Components**
All Reach-In models will have spark free refrigeration components for optimal safety, per UL requirements.



ESTABLISHING A **NEW STANDARD** IN THE FOODSERVICE INDUSTRY.

PRODUCT VIEWS

TOP VIEW



ADDITIONAL FEATURES



> Lock options with different capabilities available



> Gravity kit - Display technology beverage Visi-Slide



> Casters and legs available



> Price Kit - Available for shelf display



> Sliding Door model option available

Customer service and warranty

Three year limited warranty, includes parts and labor.

An additional two year warranty is issued on the compressor (USA & Canada only).

Operators must follow installation and operational guidelines per Imbera Users Manual.

Each cooler must be connected directly to a single power supply, otherwise warranty will be voided.

Customer service: 866.548.5770

TECHNICAL SPECIFICATIONS

Exterior Dimensions

H: 78 3/4" 200 cm
W: 54 1/4" 138 cm
D: 31 3/8" 80 cm

Interior Dimensions

H: 59 5/8" 152 cm
W: 50 1/8" 127 cm
D: 24 7/8" 63 cm

Usable Interior Capacity

H: 52 1/8" 132 cm
W: 47 3/8" 120 cm
D: 19 1/8" 49 cm

Usable Volume

41.7 ft³
1180 lts

Doors	Door construction	Shelves	Shelves Size	
2	V7 Plastic frame	10	W: 24 1/4"	62 cm
			D: 19 3/4"	50 cm

External Material Pre-painted steel

Internal Material Pre-painted steel

REFRIGERATION PERFORMANCE DATA

Refrigerant

R290 3.4 Oz (0.095 kg)

Energy Consumption

3.290 kWh/24h

Compressor Power

1/2+ HP

Condenser

Finless (low maintenance)

Thermostat setting default

Cut-Out
32°F [0°C]

Cut-In
44.6°F [7°C]

ELECTRICAL DATA

Power supply

115V/60 Hz

AMPS

8.7 A

Lighting

205.2 Lux Output
18 modules
8 LED per module

Plug Type

NEMA 5-15P

Controller

ETC1H

Cord length

128" [327 cm]

LOGISTIC DATA

Trailer Loads

53': 30

Unit weight with packaging

501.7 lb 227.6 kg

without packaging

466.2 lb 211.5 kg

Dimensions w/packaging

H: 82 1/4" 209 cm

W: 56 1/2" 143 cm

D: 31 1/2" 80 cm

*Energy consumption based on ANSI/ASHRAE Standard 72-2005

*BMAD System (Low maintenance high performance)

*Dimensions rounded up to the nearest inch or centimeter

*Specifications subject to change without notice

*H: Height, W: Width, D: Depth

07/09/2021